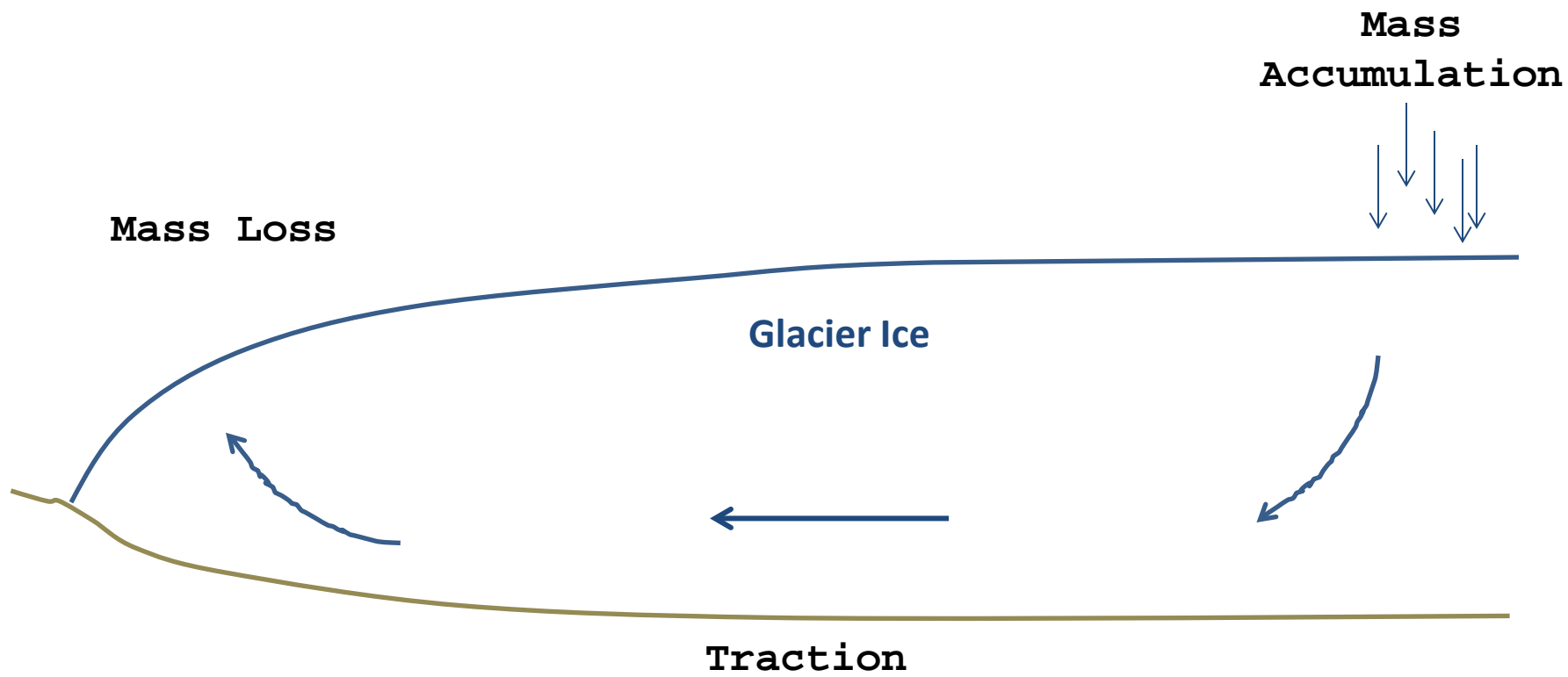
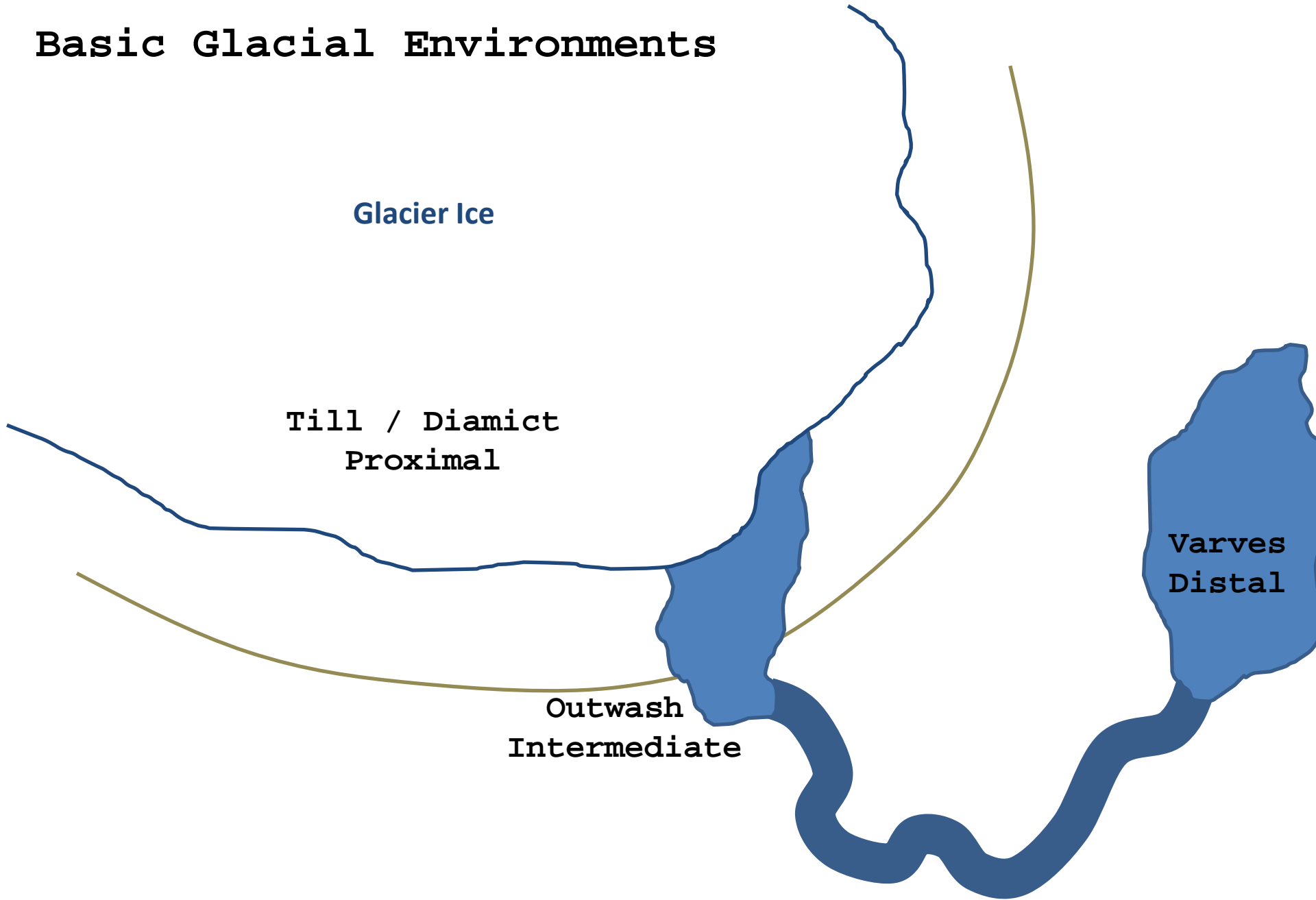


# Basic Glacier as a Fluid



# Basic Glacial Environments



Glacier Ice

Till / Diamict  
Proximal

Outwash  
Intermediate

Varves  
Distal

# Diamict - Till

Unsorted sediments represent the range of products of glacial erosion



[calvin.edu]

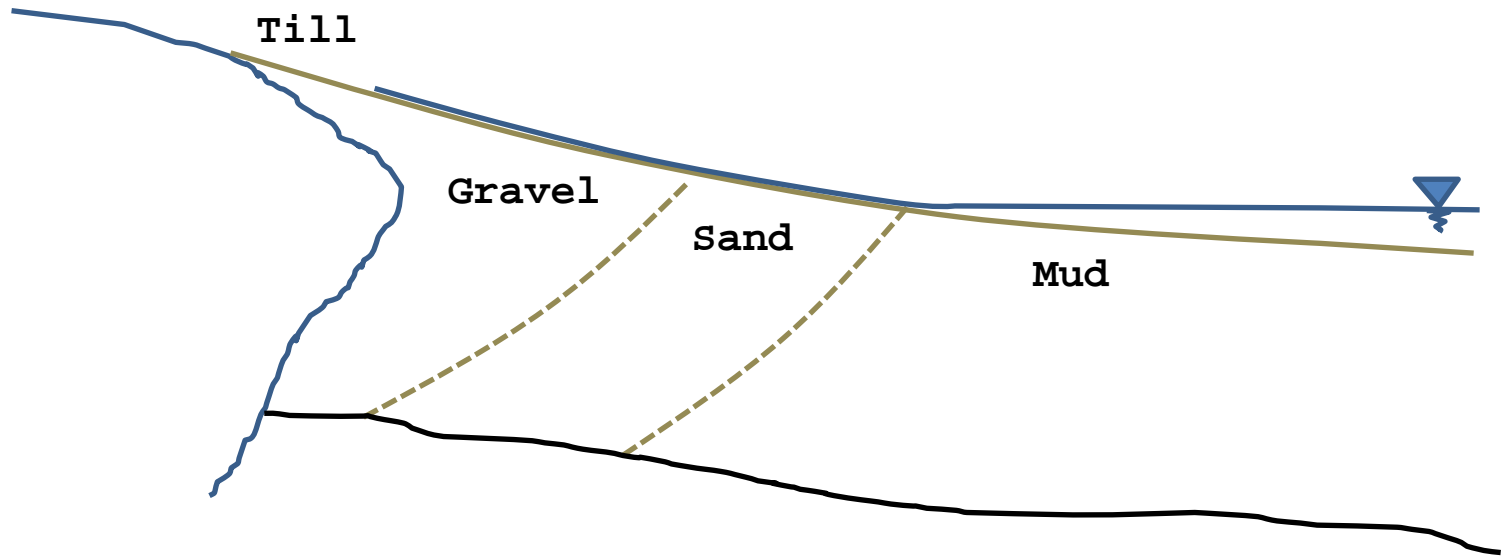
# Outwash Fan



[USGS]

# Outwash Fan

Ice Advance



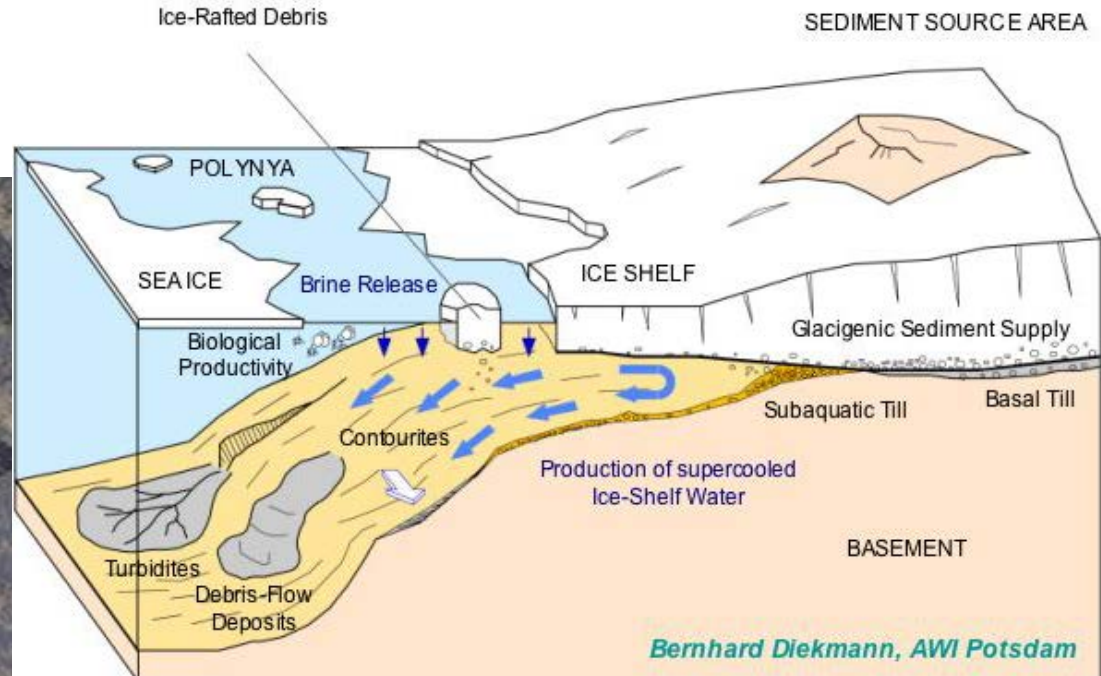
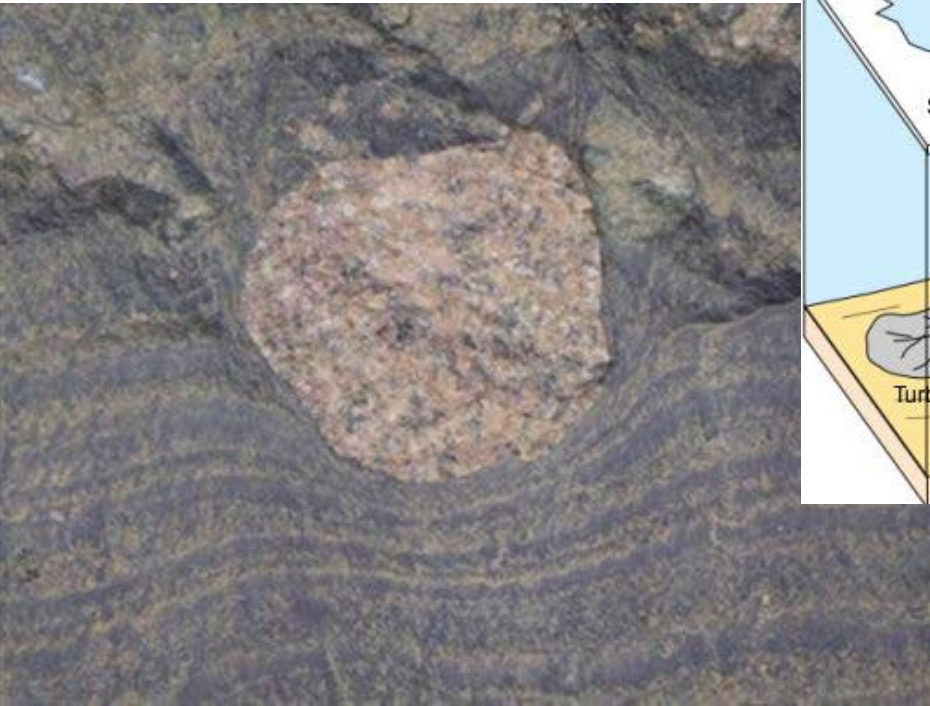
# Varves

Sediment layers that record annual variations in deposition



[SERC]

# Marine Ice Margins



[Le Heron, 2010]